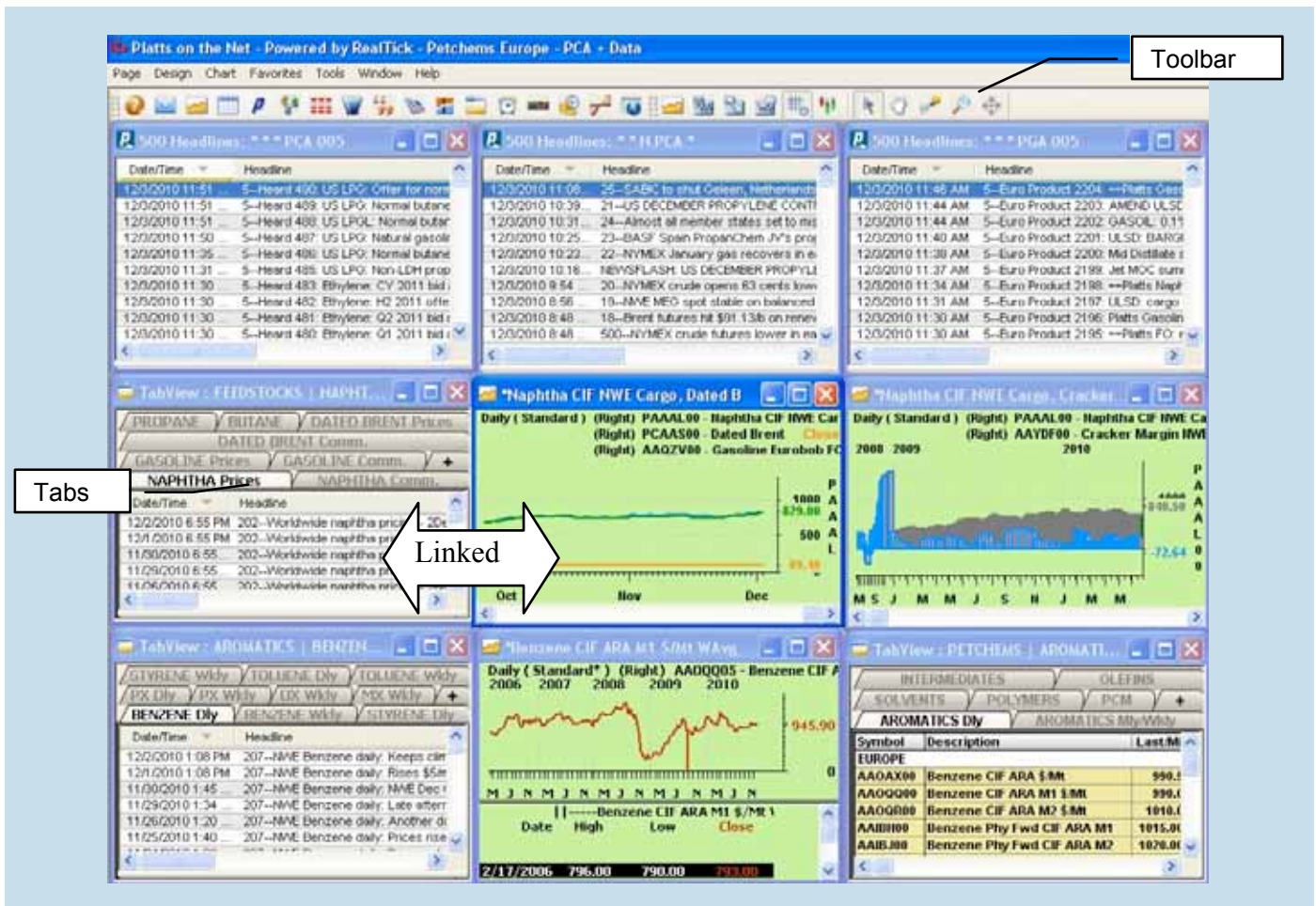


Getting Started with Platts on the Net



What is Platts on the Net?

Platts on the Net (POTN) is a software application developed for Platts by Realtick, LLC. It allows users to access a vast array of exchange and market information, Platts news, data and analytics quickly and easily.

POTN Content – quick look

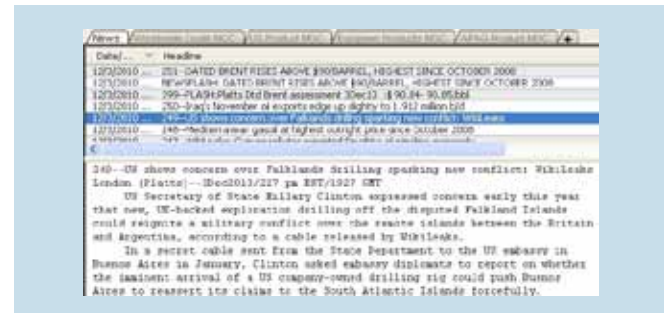
Users can use a series of predefined tiled panes with tabbed sub-views to access most of the news and pricing content published by Platts. The downloaded page / desktops may or may not meet your needs, but you can view them until an appointment can be created for specialized assistance. The underlying information must be included in your subscription or the panes will be blank.

To Open a Page (Desktop)

1. Click the **Page** menu and then **Open**. The dialog will open to the Platts/Pages subdirectory.
2. Select a desktop that matches your interests and subscription. Double click on the desired page. They take time to load so please be patient. The panes will only populate with information in the subscription; i.e. the NYMEX live windows will not fill in unless NYMEX is in your subscription record.
3. These pages / desktops are customizable. If you make changes, please rename the desktop / page under a new name so it is not overwritten, Click **Page > Save As**.

Viewing Predefined Desktop Contents

1. Some windows have several tabs inside them. Click a tab to view its content.
2. If a price window is linked to an adjacent graph window, clicking on any line in the price window will update the graph.
3. To view news stories - first maximize the pane, highlight the desired headline, F7 will toggle between the headline, the open story, or the split screen.
4. Click or double-click on any headline in the top pane to view the full story in the bottom pane.




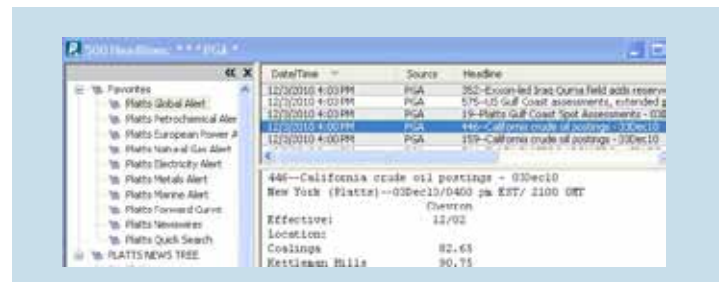
To Search for Specific News Content

1. While viewing a news pane, press F4 or right-mouse to open the Quick Search box.
2. Choose Filter Type: For most searches, Keyword or Page will be selected.
3. Type the filter criteria in the Filter box.
4. Edit Number Days Back, Max Headlines to bring back to the screen and Source.
5. By default, search will use headlines only for a keyword. Full story Boolean searches are covered in another module. Click OK or press Enter.



Using the News Tree to locate interests

1. Open a news window by clicking on the newspaper icon  or by clicking the **Design** menu and then **News**.
2. Press F10 to open the Platts News Tree pane on the left.
3. Click on the service name in the left-hand pane to show the related headlines and story on the right.



To Save a Custom Desktop

Open a page that contains as many of the elements you want to have in your custom view as possible.

1. Select the content you want to view on a regular basis and remove / close any unneeded windows.
2. Click on the **Page** menu and then on **Save As**. Enter a new file name. This will protect your custom work from automatic overwrites. The program handles management of desktop / page versions the same as most Windows programs.

This document is a very brief overview to get you started using the predefined page / desktops installed with your program.

Please refer to Subscribers Service at Platts.com for additional instruction sheets or write to support@platts.com to arrange for training.